



**CALFEE**  
**COMMUNITY &**  
**CULTURAL CENTER**

# HONORING THE PAST, PLANNING FOR THE FUTURE

Campaign Sponsorship Guide

From 1894 to 1966, the Calfee Training School educated African American children in Pulaski, VA. Faced with severe underfunding from Jim Crow segregation, the Calfee Training School became a community, helping children and their families reach their full potential.

The future Calfee Community & Cultural Center will revitalize the positive aspects of this legacy by supporting all of Pulaski County's children, families, and organizations building a stronger future for the region.

With your support, our community can begin to honor our past and plan for our future by investing fully in our children and families today.



Sponsors help revitalize the legacy of the Calfee Training School. We appreciate your generous contribution and will provide the following opportunities for recognition:

- Name and/or company logo on the Donor Wall
- Recognition on our website, social media, and newsletters
- Sponsors of programs, rooms, and outdoor spaces will also be recognized on signs welcoming visitors into those spaces.

## African American Heritage Center at Calfee

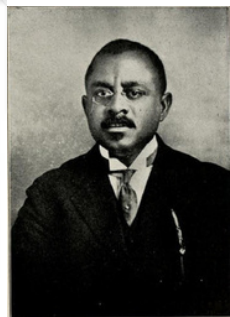


A central pillar of the planned Calfee Center will be a dynamic and interactive museum that tells the story of the Calfee Training School, the vibrant community it helped to sustain, and the nationally resonant struggle for equality at the heart of its history. By preserving the local history and interpreting its lessons for the next generation, the Calfee Training School Museum will help the Center fulfill its goals of educating and strengthening the community for the present and the future. While there will be a 675 sq. ft. museum within the center, interpretive elements will be placed around the building, grounds and into the community. A full museum sponsorship will be given prime name recognition.

**Sponsorship: \$75,000**

# Museum Exhibits

TEACHERS WHO LED FIGHT



Photograph from the March 25, 1939, Edition of the Richmond Afro-American



## "Quiet Courage"

Chauncey Harmon, Percy Corbin, and the Fight for Equality

### *Classroom Exhibit*

In the Museum's 675-square-foot main gallery, the core exhibition, "Quiet Courage" – Chauncey Harmon, Percy Corbin, and the Fight for Equality, will tell the dramatic story of two local heroes and their fight for civil rights in the years before the landmark Brown vs. Board of Education case of 1954. The exhibition will tell these powerful stories through a variety of media. The design of the space will include wooden desks, a blackboard, and other elements to emulate a classroom in a Black school during the 1930s. These elements will not only be environmental; they will also help tell the stories. Graphics will take the form of posters and pictures on the bulletin boards and blackboards. Display cases, as well as touch screens or other media, will be embedded in the desk tops.

Visitors to the Calfee Center will be greeted in the main lobby with a brief but poignant introduction to the exhibit, "Like Family" – Commitment & Community at the Calfee Training School. The exhibit will continue throughout the halls, classrooms, and public spaces of the historic building, featuring graphic displays and oral history recordings from former students that fill the corridors with the voices of the past. These voices will shed light on the history of the school, the values of hard work and communal support it embodied, the life of the local African American community of which the school was a hub, and the complicated dynamics surrounding segregation and integration.



## "Like Family"

Commitment & Community at Calfee

*Decentralized Exhibit*

Sponsorship: \$10,000/exhibit

# Outdoor Museum Exhibits

Sponsorship: \$5,000 each

---

## Fishing with Bean Cans



An outside exhibit and interpretive panel showcasing one of the children's favorite activities- fishing in the river with empty bean cans.

## Marbles



An outside interpretive panel that introduces visitors to the game of marbles, a favorite game among children at Calfee Training School.

## May Day Celebration



An outside interpretive panel that describes the importance of May Day in African American culture and at Calfee Training School.

## "Murder Ball"

An outside interpretive panel tells the story of how the students figured out a way to play a game similar to football without a ball, using a milk carton filled with gravel instead.



# Lucy and Chauncey Harmon Learning Center



The leading sponsor of the Harmon Learning Center will help revive the legacy of the Calfee Training School by offering high-quality early childhood education, out-of-school care, and drop-in care to families in our region from any background or income level. The nearly 4,000 sq. ft. Harmon Learning Center will feature six classrooms for youth children and is the central hub of CCCC.

**Sponsorship: \$100,000**

.....

\*If you are interested in a smaller contribution in support of the Harmon Learning Center, please contact us for additional sponsorship opportunities, supporting early childhood development in Pulaski.

-----

## Classrooms

**Sponsorship: \$10,000/ each**

The Harmon Learning Center will host 6 classrooms for early childhood development. Each classroom will be named after beloved Calfee Training School teachers - Irene Morrison, Nettie Anderson (sponsored), Gretchen Washington Holmes, Edna Gardner, Agnes Broady Johnson, and A.B. Chick. Sponsor or co-sponsor a room in memory or in honor of your favorite teacher.



An office suite for the Harmon Learning Center, where children are dropped off and picked up daily is available for sponsorship. Sponsorship of the suite will be visible to families daily as they check in their children.

**SPONSORED!**  
Mary White Buford  
Childcare Administrator

Office

**Sponsorship: \$2,500**

# Lena Huckstep Community Kitchen



Mrs. Lena Huckstep

A shared-use commercial kitchen named for the Calfee Training School's beloved cook, this space will be utilized by local food distribution organizations, local farmers, mobile food distribution services, as well as small food-based entrepreneurs. Two workspaces in the kitchen will allow two small cooking teams to use the space simultaneously. Adjacent to the large event space, the kitchen will also allow for easy catering for events.

**Sponsorship: \$50,000**



\*If you are interested in a smaller contribution in support of the Lena Huckstep Community Kitchen, please contact us for additional information.

# Cox and Greene Natural Playspaces



CCCC will have two natural playspaces and an outdoor classroom. The space for infants and toddler is 3000 sqft and the space for older children is 5000 sqft and will include a covered outdoor pavilion/outdoor classroom. Both spaces will include gardening areas, water features, and interactive features built from natural and recycled materials. These spaces will be available to the public after hours.

**Sponsorships:  
\$10,000/ each**

# Broadneaux- Baker Hall Event Space



Calfee will help revitalize the sense of community through an event center, equipped with state-of-the-art sound, lighting, and digital technology. This 1,542 sq ft space, adjacent to the kitchen, is ideal for hosting community meetings, performances, family gatherings, and more. Sponsorship will allow CCCC to equip the room with state-of-the-art digital, sound, and lighting technology, as well as a portable stage and furniture, to accommodate a range of meeting or event needs.

**Sponsorship: \$60,000**

# Dorothy DeBerry Venable Digital Learning Lab

The CCCC will house a 2,000 sq. ft. learning lab of high-quality digital equipment including at least thirteen computer stations. This technology will facilitate digital literacy classes ranging from basic skills to more advanced digital editing and programming for Pulaski's youth and public. Sponsorship of the learning lab will aid in Calfee offering high-quality digital, technological equipment to the community and Pulaski youth.



**Sponsorship: \$20,000**



# Additional..... Sponsorship Spaces

## Willis Gravely Board Room

The multipurpose room is 636 sq. ft. of rental space for community groups to utilize for board meetings, classes, and more. With your support, this collaboration space will host a multi-configuration board table as well as a presentation and sound system. Sponsorship of the multipurpose room will include a recognition plaque near the door.

**Sponsorship: \$25,000**

## Liverpool Rental Office

This small rental office (136 sq.ft.) is a community resource for organizations and individuals, like mental health providers, needing a short-term space to meet. Sponsorship of the rental space will help CCCC cover the cost of durable office furniture. A donor recognition plaque will be placed near the entrance.

**Sponsorship: \$5,000**

## Barber Administrative Suite

An office suite for the Calfee Community and Cultural Center's administration is available for sponsorship. Sponsorship of the administrative suite, centrally located near the museum, will include a welcoming plaque in honor of the donor.

**Sponsorship: \$2,500**



**SPONSORED!**



# Hunter Kitchenette

**SPONSORED!**

A small kitchenette accessible to the multi-purpose room and rental offices gives community members using Calfee facilities access to a fridge, sink, and more. Sponsor will receive clear recognition in the kitchenette.



**Sponsorship: \$5,000**

# Santa Cruz Gallery



**Sponsorship: \$5,000**

The 341 sq. ft. gallery space is a small multi-purpose room available for rental use by community members and may be used for temporal art exhibits, as well as a waiting room for the rental space, and more. Sponsorship this gallery will provide furniture and gallery art displays. Recognition of the sponsor will be made within the space.



CCCC is committed to collaboration and open to discussing your ideas!

# Additional Outdoor Spaces

## Musical Playspace

A series of beautiful, yet durable, outdoor musical instruments may be sponsored, giving children the joy of interactive play and music creation in nature. Children will explore the power of rhythm, experience subtle shifts in tone and discover the many ways individual sounds can be creatively combined. These beautiful musical sculptural instruments will highly benefit Pulaski children.



**Sponsorship: \$25,000**

## Ward Gazebo

A beautiful, durable 12-14' gazebo may be sponsored to support our goal of community programming and event rentals. The gazebo will be located near the river in our park, with plenty of space for visitors to enjoy community programs and events, such as music concerts, outdoor theatre, and weddings. The gazebo will include a personalized plaque in Memorium or in honor of a loved one.



**Sponsorship: \$25,000**

## Walker Amphitheater



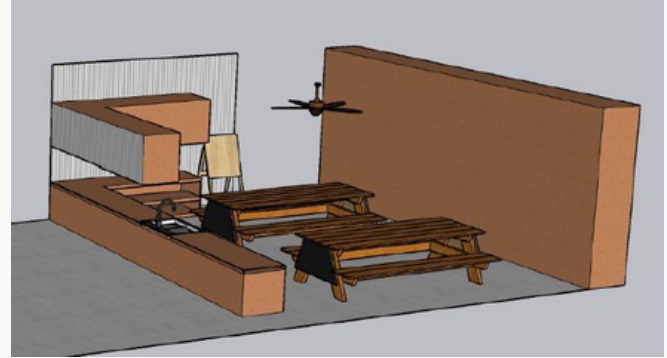
Within the pre-k outdoor playspace will be a log amphitheater designed with natural materials for children to listen to teachers read stories or to participate in group activities.

**Sponsorship: \$10,000**

Thank you for  
your support!

# Brown Outdoor Classroom

This outdoor classroom will provide a unique space for childcare teachers to provide learning opportunities through art, nature, and other potentially messy mediums to their classes. The shaded space will also be available to community members interested in hosting community events outside of normal childcare center operating hours.



**Sponsorship: \$20,000**

## Picnic Tables: \$2,500

Outdoor picnic tables for children and visitors may be sponsored. Small plaques will be placed in Memorium or in honor of a loved one on the environmentally responsible, durable outdoor furniture.

## Benches: \$2,000

Outdoor benches, made from environmentally responsible materials, will enhance our walkways. A small plaque will designate the bench in Memorium or in honor of a loved one.



## Robinson Court

An outdoor basketball court (1/2) will give youth and community members the ability to exercise, release stress, and enjoy a game. A yearly sponsorship, displayed on a decal on the backboard, will support positive, safe, and outdoor activities that build character and shape lives.

**Sponsorship: \$1,000 (Annual)**

## Walkway Trees



Beautiful, newly planted trees are available for sponsorship that will adorn the outside areas. Small plaques will be placed at the base of sponsored trees.

**Sponsorship: \$500**

## Garden Plots



Help keep Calfee Community and Cultural Center beautiful by sponsoring a raised garden bed.

**Sponsorship: \$1,500**



**CALFEE  
COMMUNITY &  
CULTURAL CENTER**

Have follow-up questions? Want to sponsor a space? Have a different idea for supporting the CCCC?

Reach out! We would love to hear from you.

**Executive Director: Jill Williams**

[jill@calfeccc.org](mailto:jill@calfeccc.org)

540-509-0068

[www.calfeccc.org](http://www.calfeccc.org)